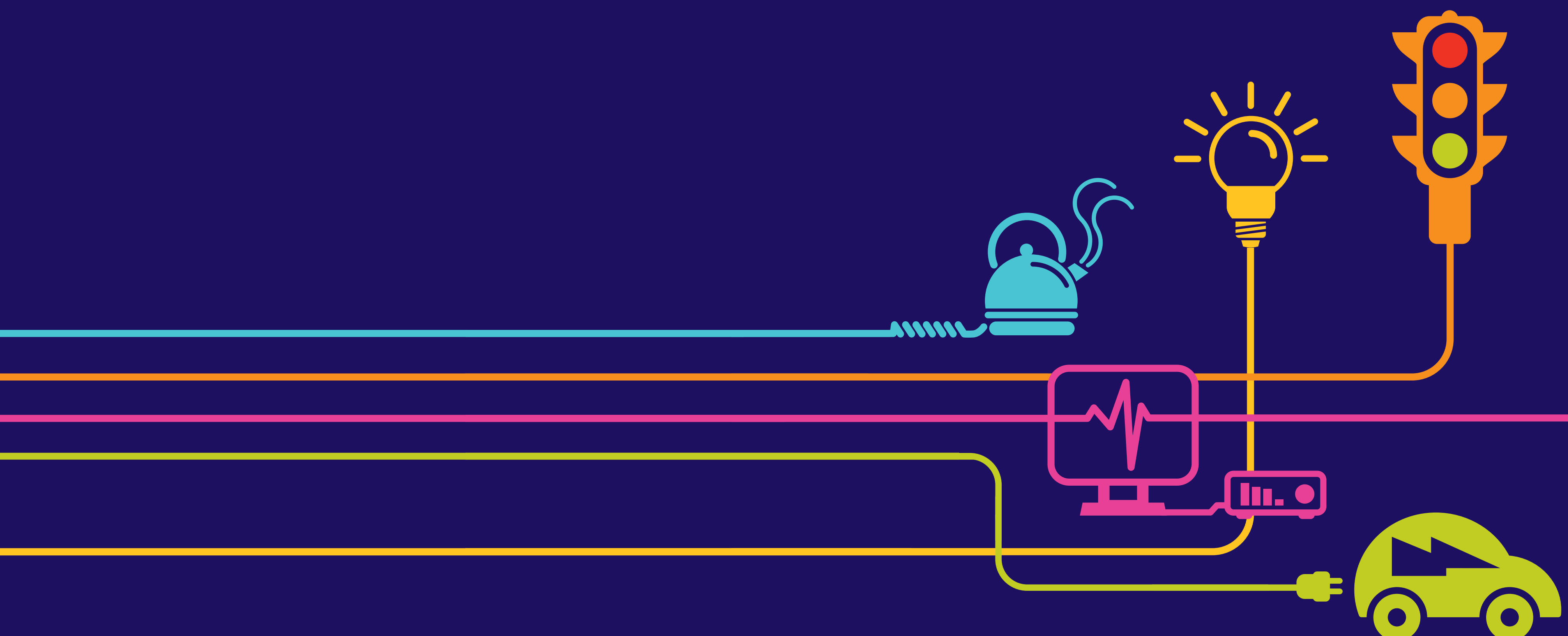


Updated Verified Photomontages Part 3

Hinkley Point C Connection Project

*Regulation 5(2)(a) of the Infrastructure Planning
(Applications: Prescribed Forms and Procedure)
Regulations 2009*



Hinkley Point C Connection Project

Volume 8.7.4 – Updated Photomontages (orange highlight indicates the contents of this Volume)

| Figure | Title | Replaces previously submitted photomontage (Volume/Figure) |
|-----------------------|---|--|
| Volume 8.7.4.1 | | |
| 8.7.4.1 | VPB12 during operation | Replaces Volume 5.18.2.4, Figure 18.2.20 |
| 8.7.4.2 | VPB20 on completion and after 15 years | Replaces Volume 5.18.2.5, Figure 18.2.29 |
| 8.7.4.3 | VPC2 on completion and after 15 years | Replaces Volume 5.18.2.7, Figure 18.2.40 |
| 8.7.4.4 | VPC6 on completion and after 15 years | Replaces Volume 5.18.2.7, Figure 18.2.44 |
| Volume 8.7.4.2 | | |
| 8.7.4.5 | VPC15 during operation | Replaces Volume 5.18.2.7, Figure 18.2.45 |
| 8.7.4.6 | VPC8 during operation | Replaces Volume 5.18.2.8, Figure 18.2.47 |
| 8.7.4.7 | VPC12 on completion and after 15 years | Replaces Volume 5.18.2.8, Figure 18.2.51 |
| 8.7.4.8 | VPC16 during operation | Replaces Volume 5.18.3, Figure 18.3.2 |
| Volume 8.7.4.3 | | |
| 8.7.4.9 | VPF1 preferred route Option A and alternative route Option B during operation | Replaces Volume 5.18.2.16, Figure 18.2.92 |
| 8.7.4.10 | VPG2 during operation | Replaces Volume 5.18.2.18, Figure 18.2.100 |
| 8.7.4.11 | VPG3 during operation | Replaces Volume 5.18.2.18, Figure 18.2.101 |
| 8.7.4.12 | VPG5 during operation | Replaces Volume 5.18.2.18, Figure 18.2.103 |
| Volume 8.7.4.4 | | |
| 8.7.4.13 | VPG7 during operation | Replaces Volume 5.18.2.19, Figure 18.2.105 |
| 8.7.4.14 | VPG8 preferred route Option A and alternative route Option B during operation | Replaces Volume 5.18.2.19, Figure 18.2.106 |



Existing view
Existing view from the Gordano Round long distance route on Naish Hill on the bridge over the M5 motorway, looking north and northeast towards the F Route and W Route in Sections E and F across Clapton Moor and Portbury Wharf Nature Reserve and the G Route and BW Route east of Portbury Wharf Nature Reserve (Section F)



Anticipated view of preferred route (Option A) during operation
Anticipated view of the 400kV overhead line supported by T-pylons in Sections E and F adjacent to the M5 motorway during operation with the F Route, W Route and the G Route removed



Anticipated view of alternative route (Option B) during operation
Anticipated view of the 400kV overhead line supported by T-pylons across Clapton Moor and Portbury Wharf Nature Reserve in Sections E and F during operation, with the F Route, W Route, G Route and part of the BW Route removed

Viewing Information

This is a composite image made up of 5 No. 50mm photographs joined together horizontally to form an overall field of view which is wider than that seen in detail by the human eye.

For correct perspective viewing, this image must be viewed at an exact distance of 300mm with one eye whilst curving the image in an exact arc of 119.4 degrees. This image should only be assessed in the real landscape from the same viewpoint.

When not in the real landscape in order to provide an accurate representation images should be viewed with one eye by panning across a flat image with the eye remaining at the recommended viewing distance of 300mm from the image.

'This document relates to paragraph 5(2)(q) of the Infrastructure Planning (Applications: prescribed forms and procedure) Regulations 2009'

Light Detection and Ranging (LIDAR) level data typically at 40 points per/m2 and also data at 1m and 2m intervals was used for topographical information.

T-pylon

- Frame - light grey composite material, circular shape
- Insulator - light blue/grey composite material
- Twin conductor bundle

Steel lattice pylon

- Frame - grey steel material
- Insulator - light blue/grey composite material
- Twin conductor bundle

| | | | | | |
|---|-----------------|-------------------|------|------|-------|
| Date of photograph: 03/04/2013 Lens type:50mm (digital full frame camera) | | | | | |
| Distance to the nearest proposed T-pylon: 502m OS reference of viewpoint: X= 347932.728 Y= 173991.305 | | | | | |
| Direction of view: 30.55 ^o (north) Viewpoint height: 75.081m AOD | | | | | |
| Horizontal field of view: 119.4 ^o Viewing distance approx 300mm at A1 | | | | | |
| | | | | | |
| © Crown copyright, All rights reserved, 2014 Licence Number 0100014673 | | | | | |
| A | 19/03/2014 | Submission to EIA | LG | NH | NH |
| ISSUE | DATE | COMMENTS | DRAW | CHKD | APPD |
| Title NATIONAL GRID (HINKLEY POINT C CONNECTION PROJECT) VOLUME 8.7.4 VERIFIED PHOTOMONTAGE VIEWPOINT VP-F1 (REPLACES PREVIOUSLY SUBMITTED VOLUME 5.18.2.16, FIGURE 18.2.92) | | | | | |
| | | | | | |
| National Grid plc, National Grid Energy Services Ltd, 100, Broad Street, Birmingham, B1 4PU, UK | | | | | |
| NSG INVESTMENT No. | APPLICATION No. | | | | IN |
| 20897 | EN020001 | | | | A1 |
| FIGURE No. | DRAWING No. | | | | SCALE |
| 8.7.4.9 | IN1979.013A | | | | NTS |
| SHEET 1 OF 1 | | | | | ISSUE |
| | | | | | A |



Existing view
Existing view from Regional Cycle Route 10 on the bridge over the M49 motorway on Moorhouse Lane in Avonmouth, looking southwest along the G Route and BW Route towards industrial buildings and wind turbines (Section G)



Anticipated view during operation
Anticipated view of the 400kV overhead line supported by steel lattice pylons during operation (with a section of the G Route and four trees removed)

Viewing Information

This is a composite image made up of 5 No. 50mm photographs joined together horizontally to form an overall field of view which is wider than that seen in detail by the human eye.

For correct perspective viewing, this image must be viewed at an exact distance of 300mm with one eye whilst curving the image in an exact arc of 119.15 degrees. This image should only be assessed in the real landscape from the same viewpoint.

When not in the real landscape in order to provide an accurate representation images should be viewed with one eye by panning across a flat image with the eye remaining at the recommended viewing distance of 300mm from the image.

'This document relates to paragraph 5(2)(q) of the Infrastructure Planning (Applications: prescribed forms and procedure) Regulations 2009'

Light Detection and Ranging (LIDAR) level data typically at 40 points per/m2 and also data at 1m and 2m intervals was used for topographical information.

Steel lattice pylon

- Frame - grey steel material
- Insulator - light blue/grey composite material
- Twin conductor bundle

| | | | | | |
|---|-----------------|-------------------|-------|------|-------|
| Date of photograph: 13/11/2013 Lens type:50mm (digital full frame camera) | | | | | |
| Distance to the nearest proposed lattice pylon: 168m OS reference of viewpoint: X= 354240.794 Y= 180057.628 | | | | | |
| Direction of view: 226.84 ^o (south west) Viewpoint height: 15.489m AOD | | | | | |
| Horizontal field of view: 119.15 ^o Viewing distance approx 300mm at A1 | | | | | |
| | | | | | |
| © Crown Copyright. All rights reserved. 2014. Licence number 0100016073 | | | | | |
| A | 19/03/2014 | Submission to EIA | LG | NH | NH |
| ISSUE | DATE | COMMENTS | DRAWN | CHKD | APPD |
| Title NATIONAL GRID (HINKLEY POINT C CONNECTION PROJECT) VOLUME 8.7.4 VERIFIED PHOTOMONTAGE VIEWPOINT VPC2 (REPLACES PREVIOUSLY SUBMITTED VOLUME 5.18.2.18, FIGURE 18.2.100) | | | | | |
| | | | | | |
| National Grid plc, National Technology Park, Glenfield Rd, Leicester, LE3 7GB | | | | | |
| NSG INVESTMENT No. | APPLICATION No. | | | | IN |
| 20897 | EN020001 | | | | A1 |
| FIGURE No. | DRAWING No. | | | | SCALE |
| 8.7.4.10 | IN1979.013A | | | | NTS |
| SHEET 1 OF 1 | | | | | ISSUE |
| | | | | | A |



Existing view

Existing view from PRoW on Spaniorum Hill off Berwick Lane east of Spaniorum Farm, looking west across fields towards Seabank Power Station and the adjacent Seabank Substation, a gas works and Severn Bridge; with the DA Route, G Route, BW Route, 2VL Route and several wind turbines visible above trees (Section G)



Anticipated view during operation

Anticipated view of the 400kV overhead line supported by steel lattice pylons and the Seabank Substation extension visible in the distance above trees during operation and a section of the G Route, BW Route and the DA Route removed at the connection to Seabank Substation

Viewing Information

This is a composite image made up of 4 No. 50mm photographs joined together horizontally to form an overall field of view which is wider than that seen in detail by the human eye.

For correct perspective viewing, this image must be viewed at an exact distance of 300mm with one eye whilst curving the image in an exact arc of 98.5 degrees. This image should only be assessed in the real landscape from the same viewpoint.

When not in the real landscape in order to provide an accurate representation images should be viewed with one eye by panning across a flat image with the eye remaining at the recommended viewing distance of 300mm from the image.

'This document relates to paragraph 5(2)(q) of the Infrastructure Planning (Applications: prescribed forms and procedure) Regulations 2009'

Light Detection and Ranging (LIDAR) level data typically at 40 points per/m2 and also data at 1m and 2m intervals was used for topographical information.

Steel lattice pylon

- Frame - grey steel material
- Insulator - light blue/grey composite material
- Twin conductor bundle

| | | | | | |
|---|-----------------|-------------------|------|------|-------|
| Date of photograph: 13/11/2013 Lens type:50mm (digital full frame camera) | | | | | |
| Distance to the nearest proposed lattice pylon: 2219m OS reference of viewpoint: X= 356279.336 Y= 181721.445 | | | | | |
| Direction of view: 267.9 ^o (west) Viewpoint height: 27.262m AOD | | | | | |
| Horizontal field of view: 98.5 ^o Viewing distance approx 300mm at A1 | | | | | |
| | | | | | |
| A | 19/03/2018 | Submission to EIA | LG | NH | NH |
| ISSUE | DATE | COMMENTS | DRAW | CHKD | APPD |
| Title NATIONAL GRID (HINKLEY POINT C CONNECTION PROJECT) VOLUME 8.7.4 VERIFIED PHOTOMONTAGE VIEWPOINT VPG3 (REPLACES PREVIOUSLY SUBMITTED VOLUME 5.18.2.18, FIGURE 18.2.101) | | | | | |
| | | | | | |
| NG INVESTMENT No. | APPLICATION No. | | | | IN |
| 20897 | EN020001 | | | | A1 |
| FIGURE No. | DRAWING No. | | | | SCALE |
| 8.7.4.11 | IN1979.013A | | | | NTS |
| SHEET 1 OF 1 | | | | | ISSUE |
| | | | | | A |



Existing view
Existing view from the settlement edge of Lawrence Weston near Hill End Drive and Royal Close, looking west over fields towards industry in Avonmouth, Seabank Power Station and a gas works with the G Route, BW Route and several wind turbines visible above trees in the distance (Section G)



Anticipated view during operation
Anticipated view of the 400kV overhead line supported by steel lattice pylons visible above trees in the distance during operation with a section of the G route removed

Viewing Information

This is a composite image made up of 4 No. 50mm photographs joined together horizontally to form an overall field of view which is wider than that seen in detail by the human eye.

For correct perspective viewing, this image must be viewed at an exact distance of 300mm with one eye whilst curving the image in an exact arc of 99.16 degrees. This image should only be assessed in the real landscape from the same viewpoint.

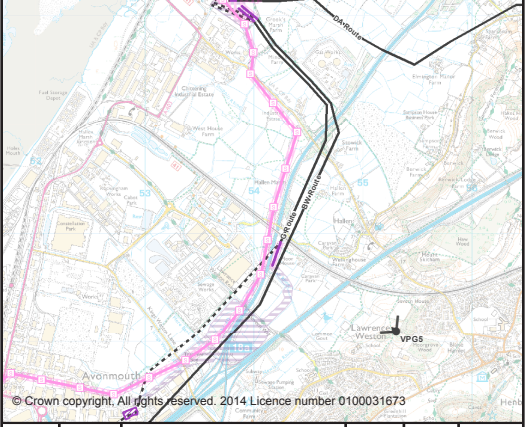

When not in the real landscape in order to provide an accurate representation images should be viewed with one eye by panning across a flat image with the eye remaining at the recommended viewing distance of 300mm from the image.

'This document relates to paragraph 5(2)(q) of the Infrastructure Planning (Applications: prescribed forms and procedure) Regulations 2009'

Light Detection and Ranging (LIDAR) level data typically at 40 points per/m2 and also data at 1m and 2m intervals was used for topographical information.

Steel lattice pylon

- Frame - grey steel material
- Insulator - light blue/grey composite material
- Twin conductor bundle

| | | | | | |
|--|-----------------|-------------------|------|------|-------|
| Date of photograph: 13/11/2013 Lens type:50mm (digital full frame camera) | | | | | |
| Distance to the nearest proposed lattice pylon: 1348m OS reference of viewpoint: X= 355301.957 Y= 179097.162 | | | | | |
| Direction of view: 316.36 ^o (north) Viewpoint height: 37.537m AOD | | | | | |
| Horizontal field of view: 99.16 ^o Viewing distance approx 300mm at A1 | | | | | |
|  | | | | | |
| A | 19/03/2016 | Submission to EIA | LG | NH | NH |
| ISSUE | DATE | COMMENTS | DRAW | CHKD | APPD |
| Title NATIONAL GRID (HINKLEY POINT C CONNECTION PROJECT) VOLUME 8.7.4 VERIFIED PHOTOMONTAGE VIEWPOINT VPCS (REPLACES PREVIOUSLY SUBMITTED VOLUME 5.18.2.18, FIGURE 18.2.103) | | | | | |
|  <small>National Grid plc, National Technology Park, Warrington, CH94 0DA</small> | | | | | |
| NG INVESTMENT No. | APPLICATION No. | | | | IN |
| 20897 | EN020001 | | | | A1 |
| FIGURE No. | DRAWING No. | | | | SCALE |
| 8.7.4.12 | IN1979.013A | | | | NTS |
| SHEET 1 OF 1 | | | | | ISSUE |
| | | | | | A |